

# BANGOR MALL

663 Stillwater Ave. Bangor, ME 4401-3606

## PROPERTY

Demographics	1 mile	3 miles	5 miles
Population	1,469	31,664	47,701
Avg. HH Income	\$105,102	\$80,633	\$86,712
Total Households	626	14,990	21,853

## HIGHLIGHTS

- Property is located on Stillwater Ave with visibility on the I-95
- Located just seven miles south of the University of Maine
- Shopping destination for the surrounding Bangor area as well as eastern provinces of Canada

## NOTES

- GLA: 531,032 SF
- Availabilities: Anchors, Outparcels & In-Line space
- Traffic Count: 13,808 VPD Stillwater Ave.  
38,000 VPD Interstate 95

## ANCHORS

- JC Penney, Dick's & Furniture Mattress



**MASON**  
ASSET MANAGEMENT

T: 516 371.5858  
E: [leasing@masonam.com](mailto:leasing@masonam.com)  
150 Great Neck Road Suite 402  
Great Neck, NY, 11021  
[www.masonam.com](http://www.masonam.com)

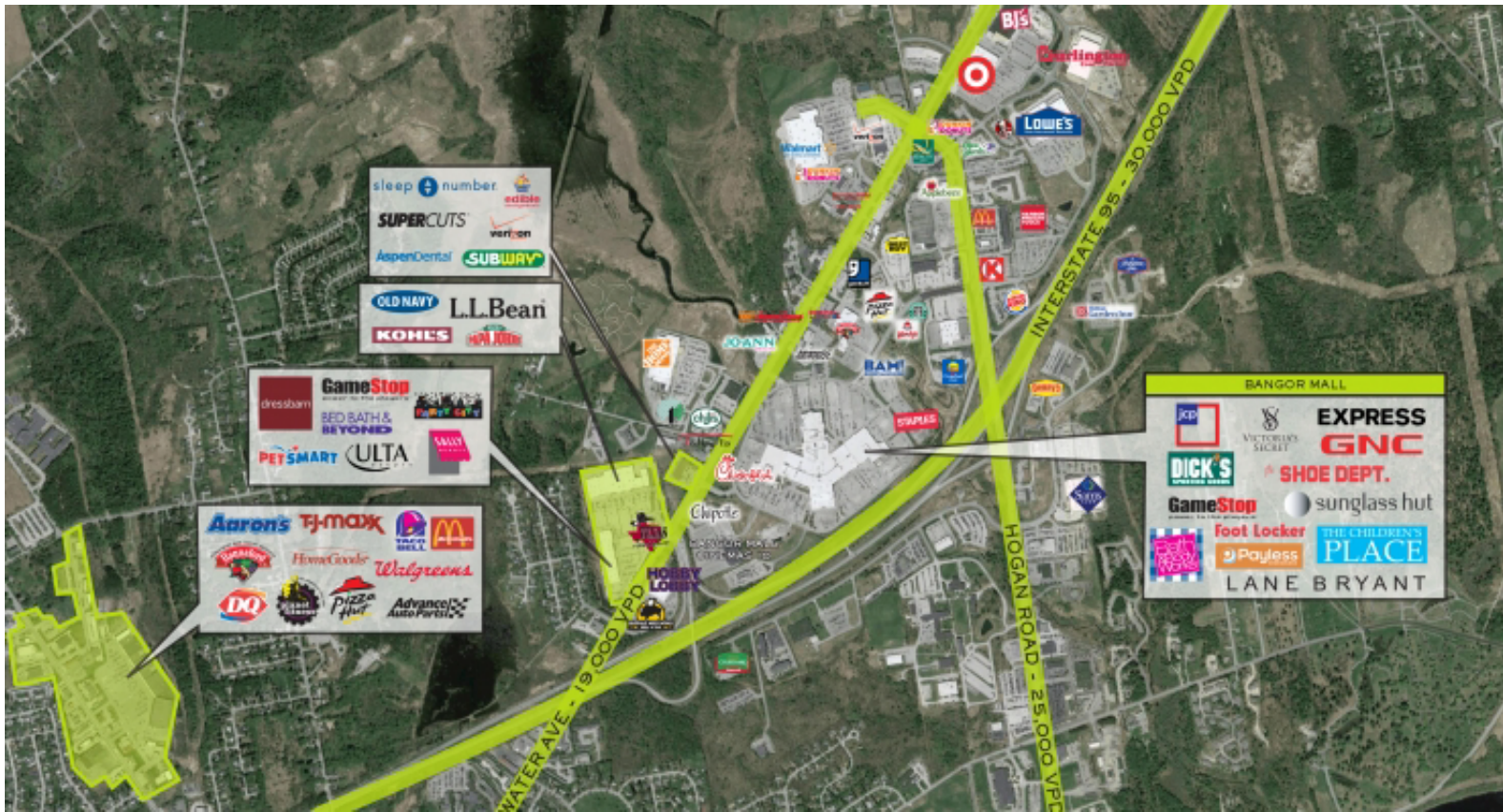




# BANGOR MALL

663 Stillwater Ave. Bangor, ME 4401-3606

## RETAILER MAP



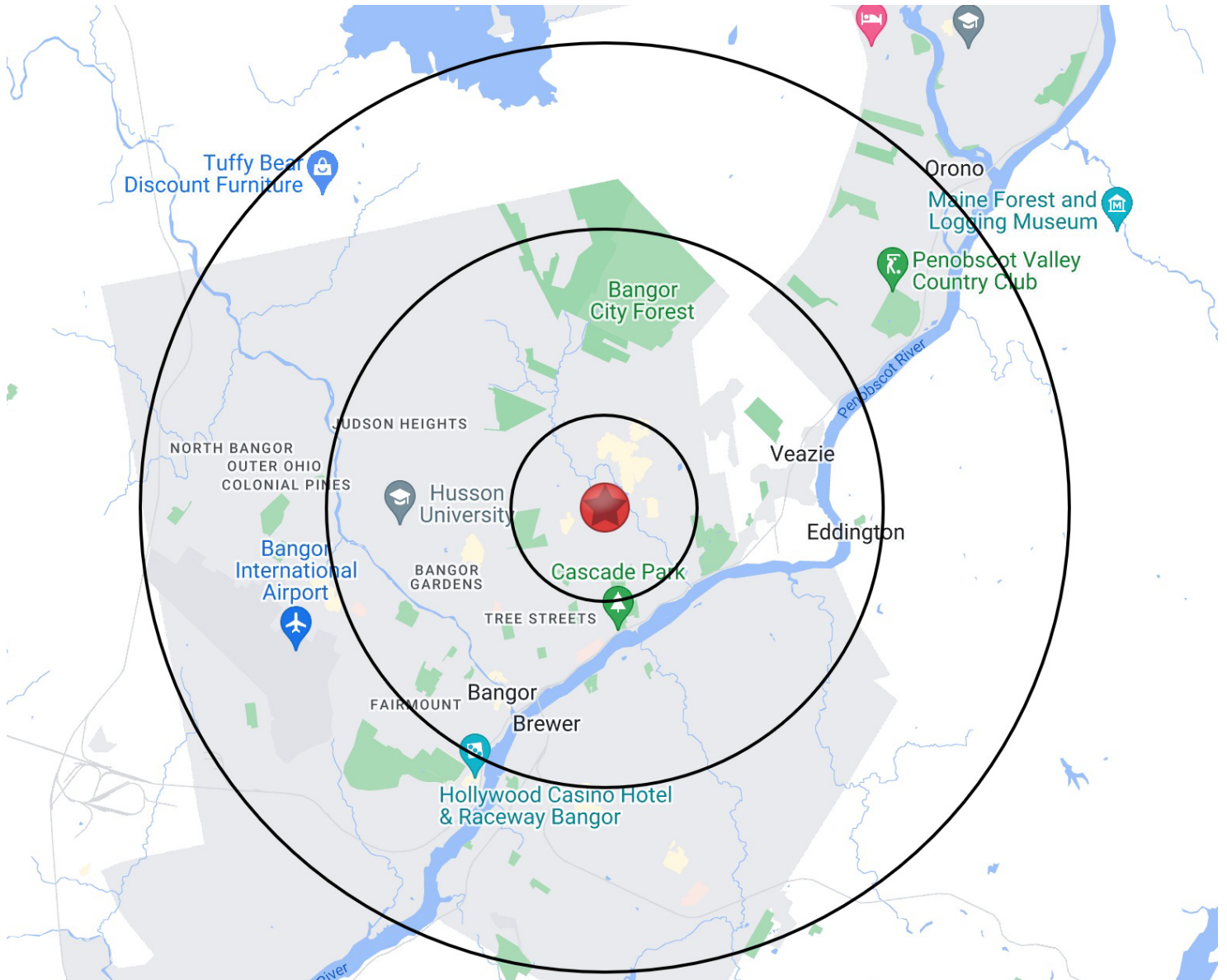
**MASON**  
ASSET MANAGEMENT

T: 516 371.5858  
E: [leasing@masonam.com](mailto:leasing@masonam.com)  
150 Great Neck Road Suite 402  
Great Neck, NY, 11021  
[www.masonam.com](http://www.masonam.com)

# BANGOR MALL

663 Stillwater Ave. Bangor, ME 4401-3606

## RADIUS MAP



**MASON**  
ASSET MANAGEMENT

T: 516 371.5858  
E: [leasing@masonam.com](mailto:leasing@masonam.com)  
150 Great Neck Road Suite 402  
Great Neck, NY, 11021  
[www.masonam.com](http://www.masonam.com)