

# GULF VIEW SQUARE

9409 US-19 Port Richey, FL 34668

## PROPERTY

## HIGHLIGHTS

Demographics	1 miles	3 miles	5 miles
Population	8,841	68,695	132,126
Avg. HH Income	\$52,454	\$58,811	\$66,079
Total Households	3,759	29,744	58,970

- Located across from Ross, Bed Bath & Beyond, Bealls Outlet, Burlington Coat, HH Great and many more
- Heavily trafficked US Route 19
- Located in Pasco county, Tampa Bay area

## NOTES

## ANCHORS

- GLA: 756,356 SF
- Availabilities: Anchor, In-line & Pad space
- Traffic Count: 56,500 AADT US-19

- Best Buy & Dillard's



**MASON**  
ASSET MANAGEMENT

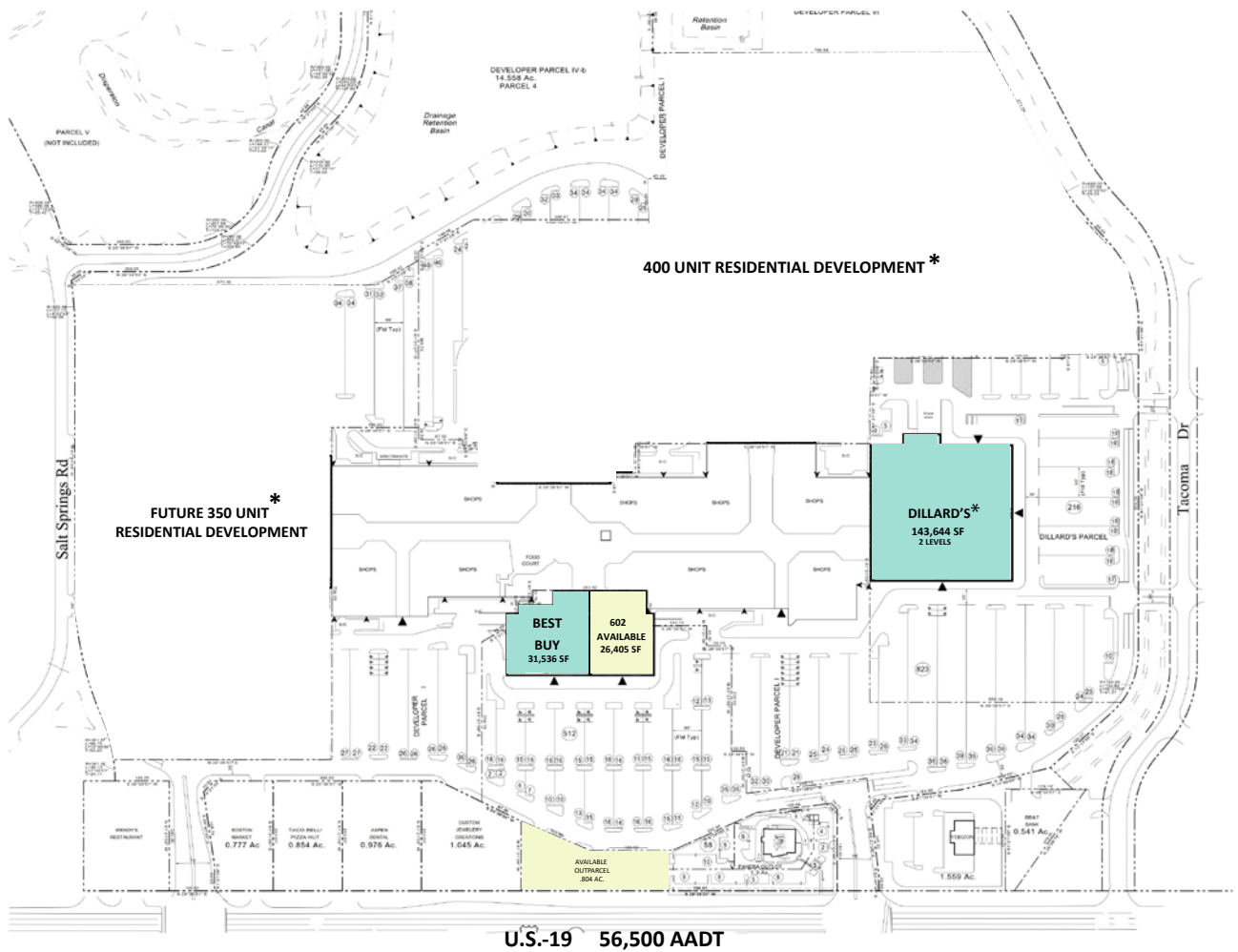
T: 516 371.5858  
E: [leasing@masonam.com](mailto:leasing@masonam.com)  
150 Great Neck Road Suite 402  
Great Neck, NY, 11021  
[www.masonam.com](http://www.masonam.com)



# GULF VIEW SQUARE

9409 US-19 Port Richey, FL 34668

## SITE PLAN



\*NOT OWNED



**MASON**  
ASSET MANAGEMENT

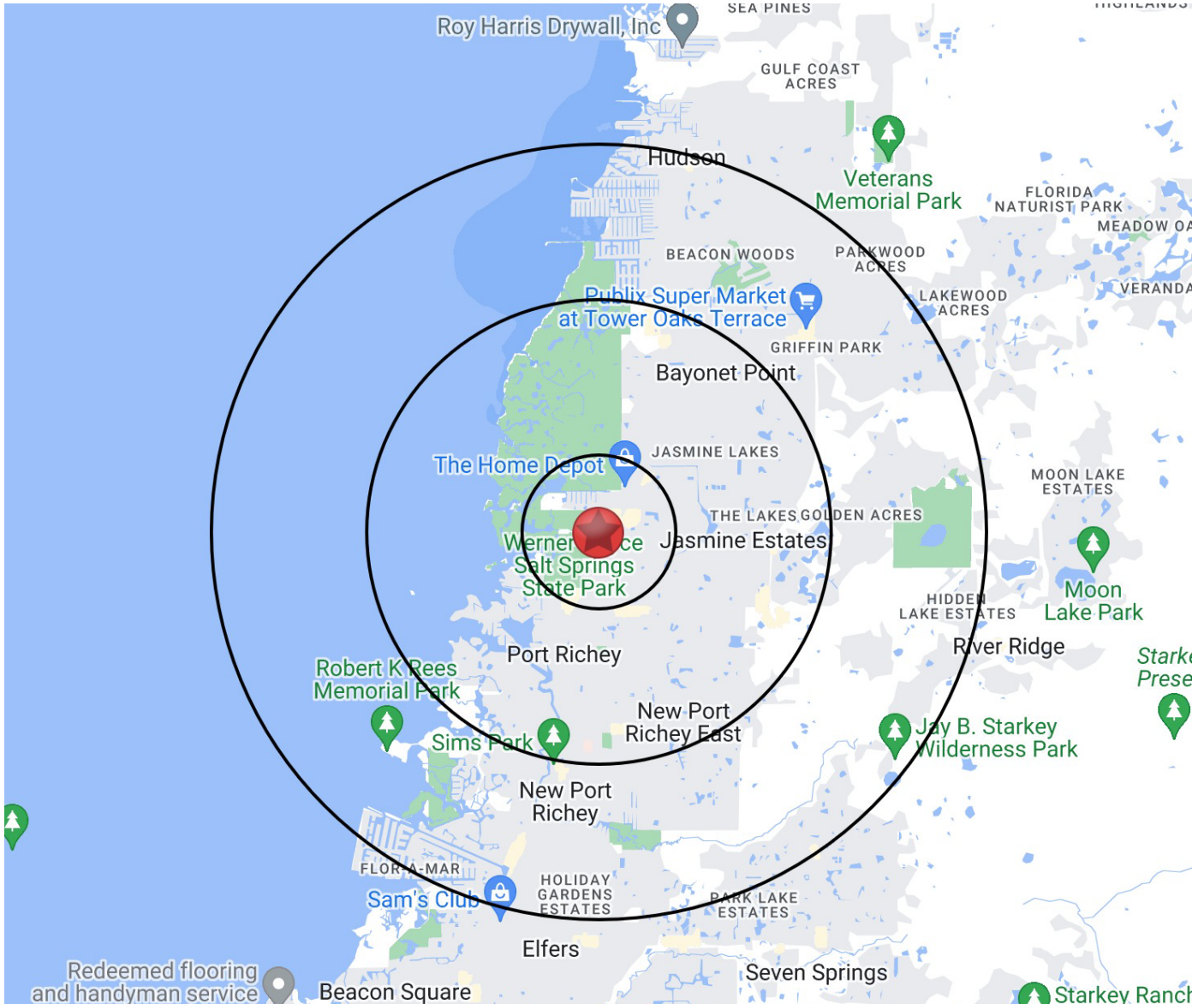
T: 516 371.5858  
E: [leasing@masonam.com](mailto:leasing@masonam.com)  
150 Great Neck Road Suite 402  
Great Neck, NY, 11021  
[www.masonam.com](http://www.masonam.com)



# GULF VIEW SQUARE

9409 US-19 Port Richey, FL 34668

## RADIUS MAP



**MASON**  
ASSET MANAGEMENT

T: 516 371.5858  
E: [leasing@masonam.com](mailto:leasing@masonam.com)  
150 Great Neck Road Suite 402  
Great Neck, NY, 11021  
[www.masonam.com](http://www.masonam.com)