

GULF VIEW SQUARE

9409 US-19 Port Richey, FL 34668

PROPERTY

HIGHLIGHTS

Demographics	1 miles	3 miles	5 miles
Population	8,841	68,695	132,126
Avg. HH Income	\$52,454	\$58,811	\$66,079
Total Households	3,759	29,744	58,970

- Located across from Ross, Bed Bath & Beyond, Bealls Outlet, Burlington Coat, HH Great and many more
- Heavily trafficked US Route 19
- Located in Pasco county, Tampa Bay area

NOTES

ANCHORS

- GLA: 756,356 SF
- Availabilities: Anchor, In-line & Pad space
- Traffic Count: 56,500 AADT US-19

- Best Buy & Dillard's



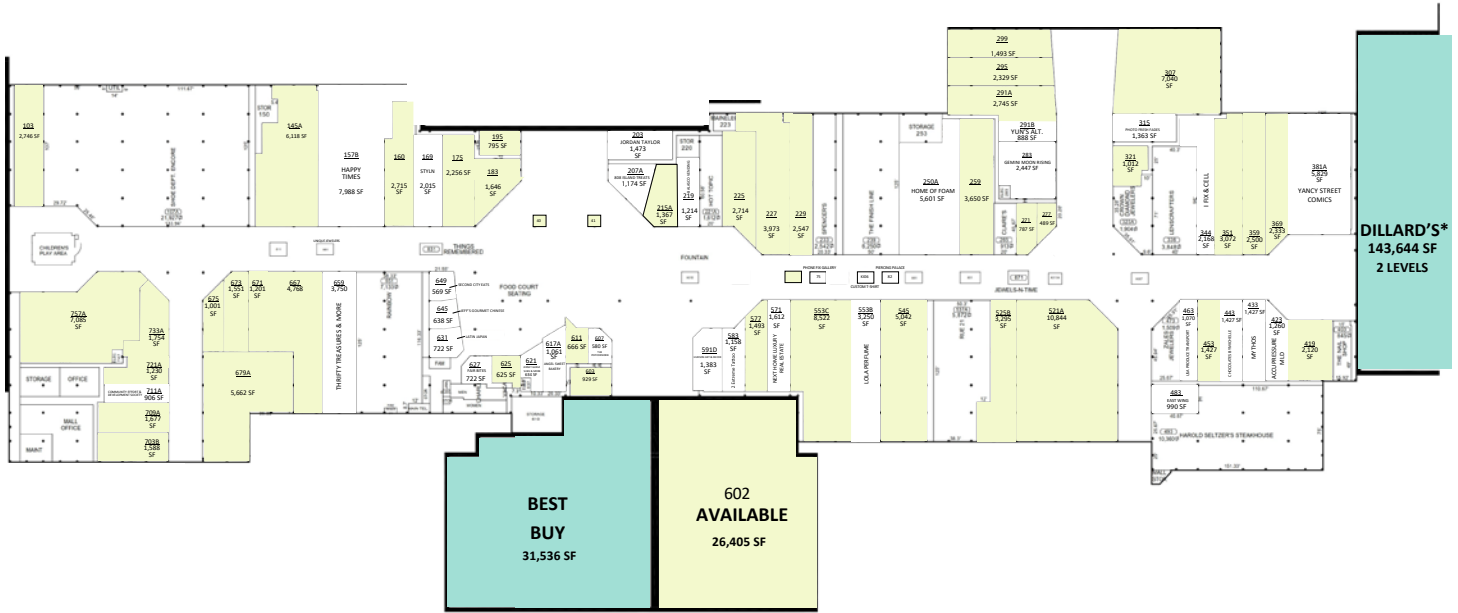
MASON
ASSET MANAGEMENT

T: 516 371.5858
E: leasing@masonam.com
150 Great Neck Road Suite 402
Great Neck, NY, 11021
www.masonam.com

GULF VIEW SQUARE

9409 US-19 Port Richey, FL 34668

LEASE PLAN



Leased Available

*NOT OWNED



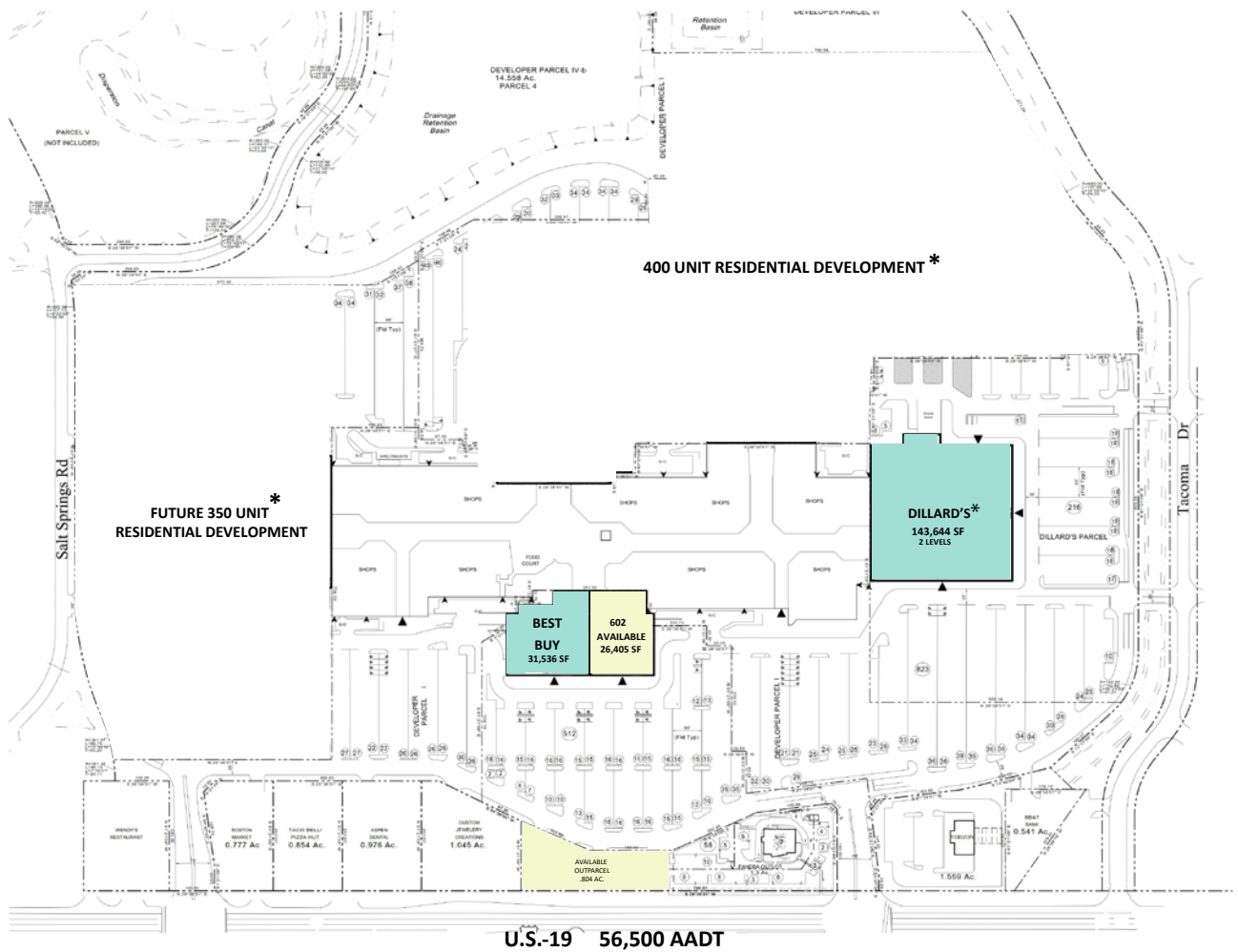
MASON
ASSET MANAGEMENT

T: 516 371.5858
E: leasing@masonam.com
150 Great Neck Road Suite 402
Great Neck, NY, 11021
www.masonam.com

GULF VIEW SQUARE

9409 US-19 Port Richey, FL 34668

SITE PLAN



*NOT OWNED



MASON
ASSET MANAGEMENT

T: 516 371.5858
E: leasing@masonam.com
150 Great Neck Road Suite 402
Great Neck, NY, 11021
www.masonam.com

GULF VIEW SQUARE

9409 US-19 Port Richey, FL 34668

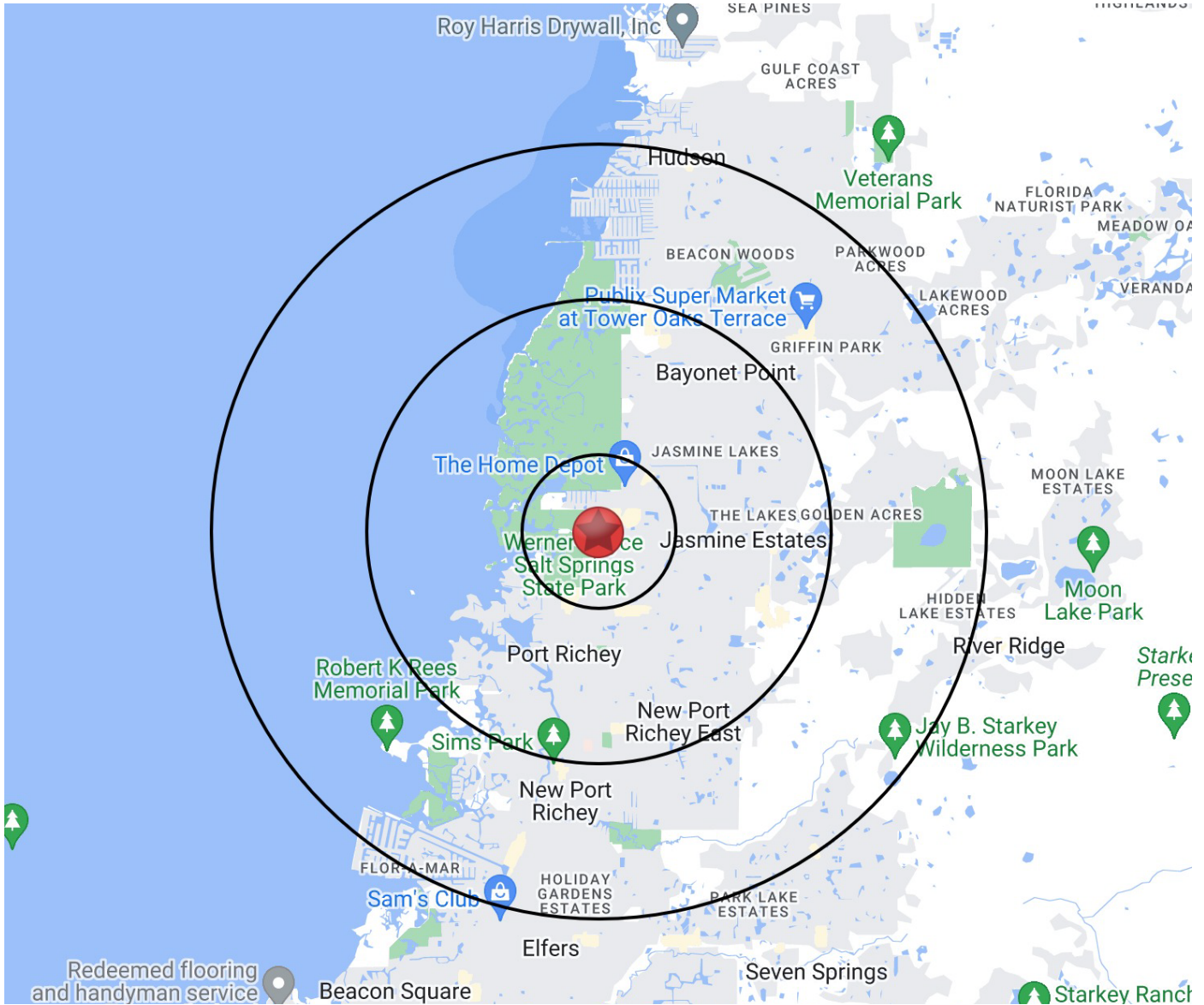
RETAILER MAP



GULF VIEW SQUARE

9409 US-19 Port Richey, FL 34668

RADIUS MAP



MASON
ASSET MANAGEMENT

T: 516 371.5858
E: leasing@masonam.com
150 Great Neck Road Suite 402
Great Neck, NY, 11021
www.masonam.com