

701 North Michigan Ave. Chicago IL 60611

PROPERTY

HIGHLIGHTS

Demographics	0.25 miles	0.50 miles	0.75 miles
Population	8,300	41,636	78,139
Avg. HH Income	\$181,818	\$193,721	\$190,568
Total Households	5,502	30,159	55,743

- Located at the base of the Warwick Allerton Hotel, a beautifully rejuvenated timeless classic
- Located on The Magnificent Mile
- Co-tenancy along the Avenue includes Louis Vuitton, Burberry, Gucci, MCM, Breitling, Max Mara and more

NOTES

NOTABLE TENANT

- Total GLA: 22,900 SF
- Availabilities:
 - Ground: 2,000-8,811 SF
 - Mezanine: 3,270 SF
 - Basement: 6,539 SF

- Rolex



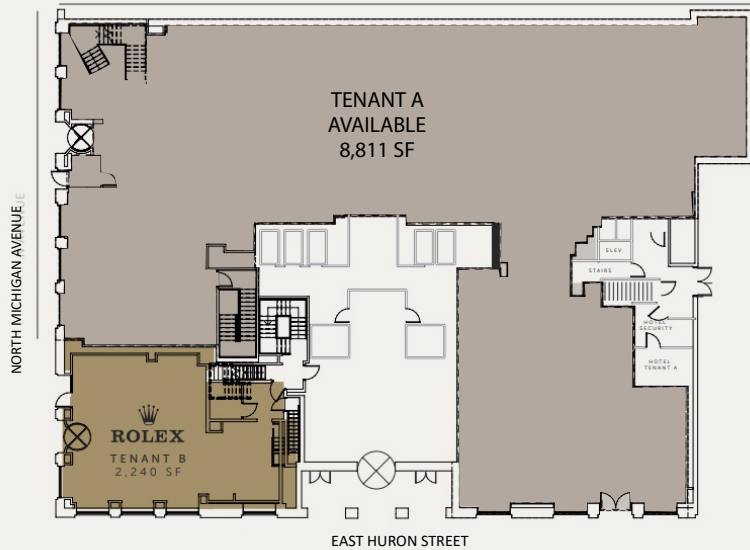
MASON
ASSET MANAGEMENT

T: 516 371.5858
E: leasing@masonam.com
150 Great Neck Rd. Suite 402
Great Neck NY 11021
www.masonam.com

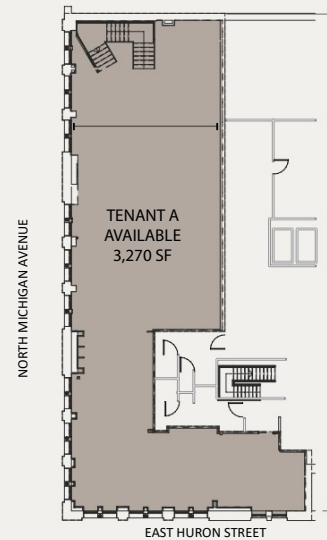
701 North Michigan Ave. Chicago IL 60611

SITE PLAN

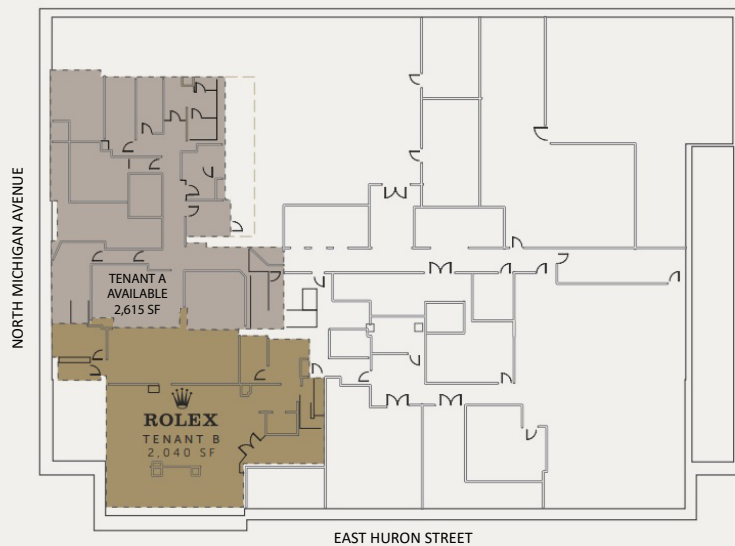
GROUND FLOOR



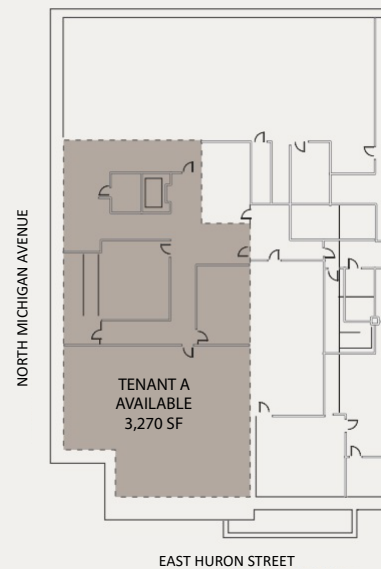
SECOND LEVEL



BASEMENT



SUB BASEMENT

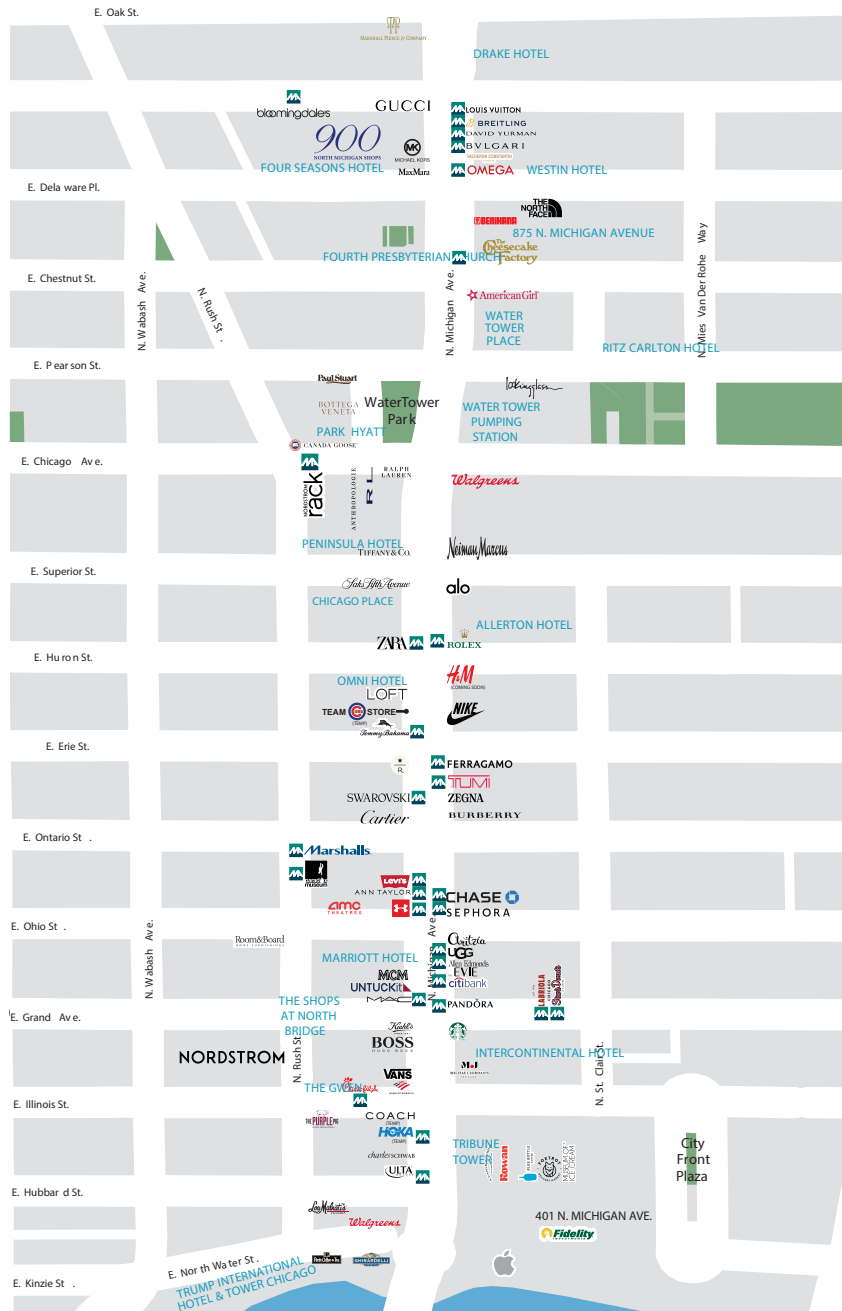


MASON
ASSET MANAGEMENT

T: 516 371.5858
E: leasing@masonam.com
150 Great Neck Rd. Suite 402
Great Neck NY 11021
www.masonam.com

701 North Michigan Ave. Chicago IL 60611

RETAILER MAP

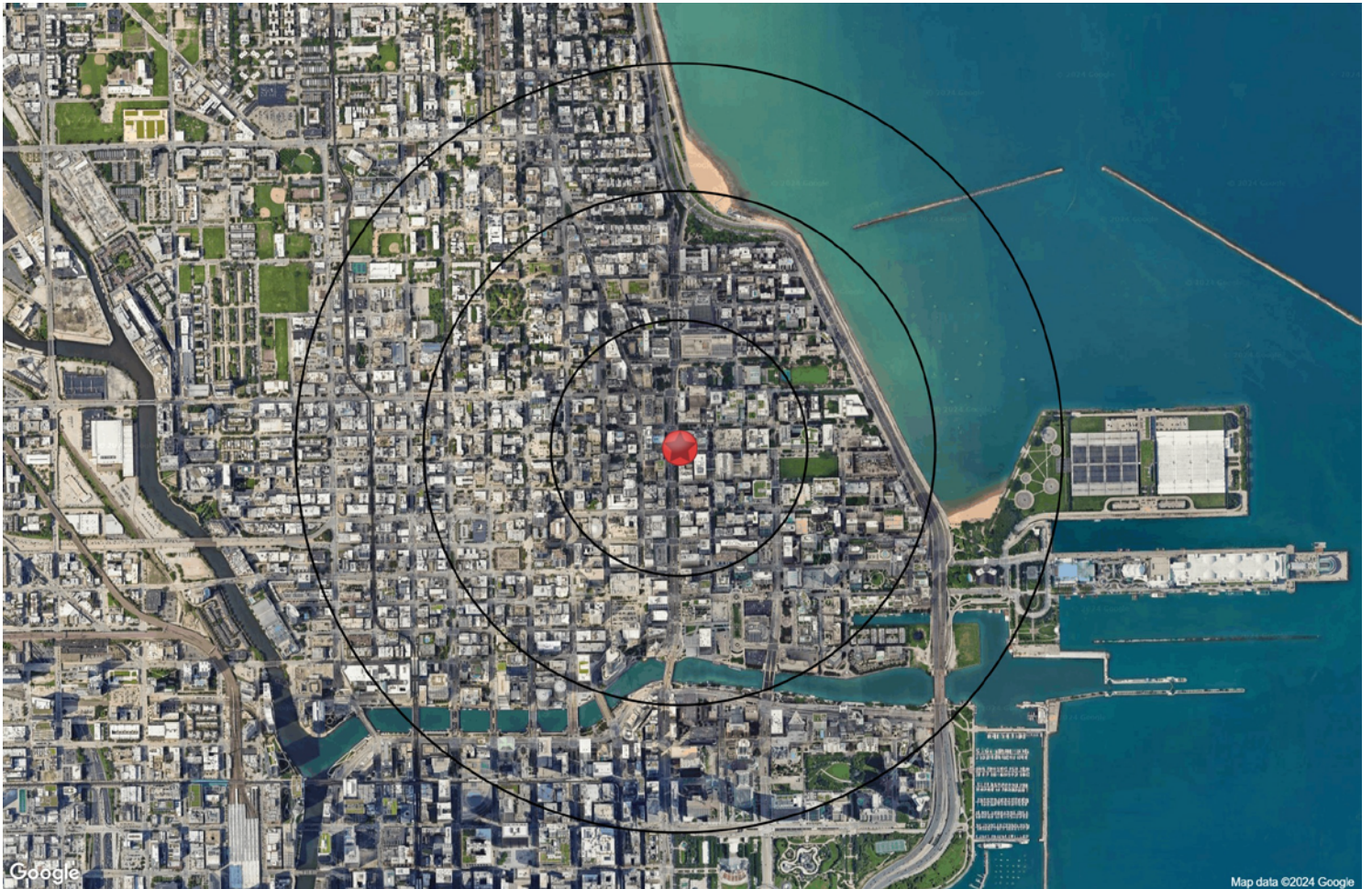


MASON
ASSET MANAGEMENT

T: 516 371.5858
E: leasing@masonam.com
150 Great Neck Rd. Suite 402
Great Neck NY 11021
www.masonam.com

701 North Michigan Ave. Chicago IL 60611

RADIUS MAP



MASON
ASSET MANAGEMENT

T: 516 371.5858
E: leasing@masonam.com
150 Great Neck Rd. Suite 402
Great Neck NY 11021
www.masonam.com