

TRUMBULL MALL

5065 Main Street, Trumbull, CT 06611

PROPERTY

Demographics	1 mile	3 miles	5 miles
Population	11,137	97,063	248,309
Avg. HH Income	\$115,463	\$126,460	\$122,859
Total Households	3,945	34,185	89,864

HIGHLIGHTS

- Adjacent to newly built 260 unit multi-family complex
- Located just off Merritt Parkway 10 miles west of New Haven, CT
- Located in fastest growing county in Connecticut - Fairfield county

NOTES

- GLA: 1,130,690 SF
- Availabilities: Anchor, Inline
- Traffic Count: 72,897 VPD Merritt Pkwy
18,949 VPD Main Street

NOTABLE TENANTS

- JCPenney, Target, Macy's & LA Fitness



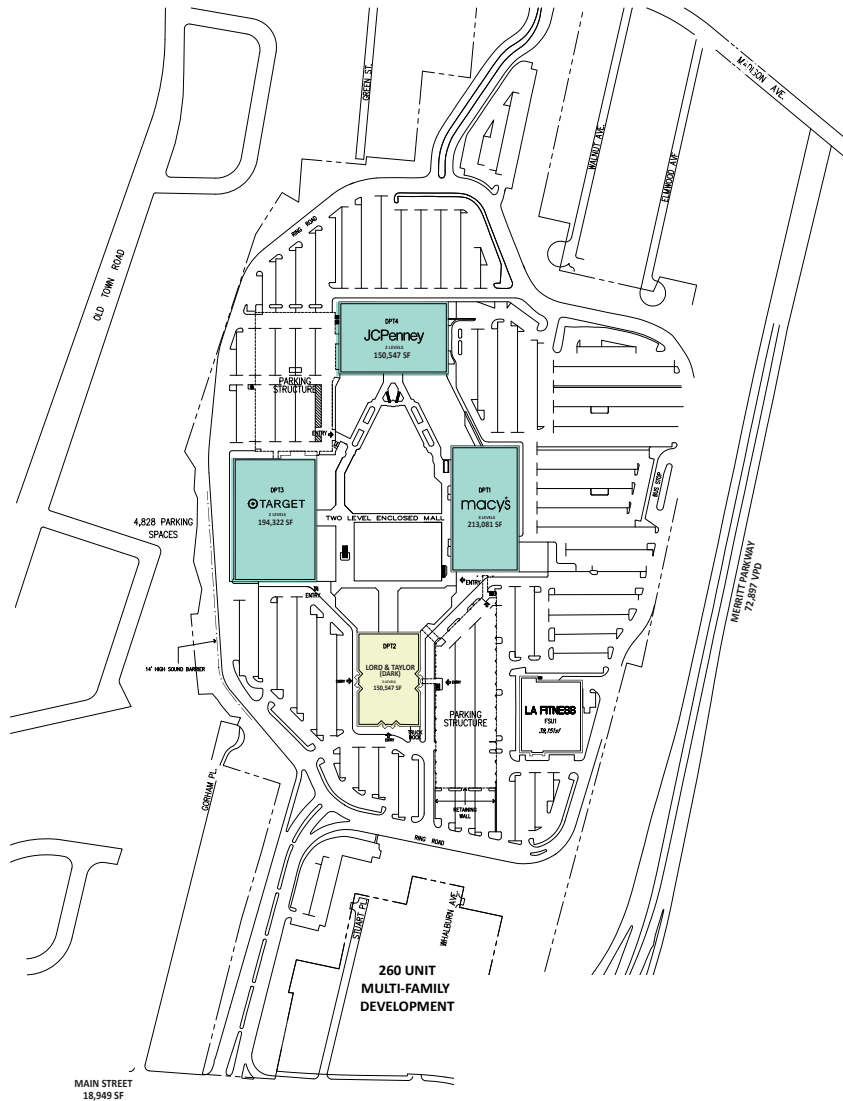
MASON
ASSET MANAGEMENT

T: 516 371.5858
E: leasing@masonam.com
747 Middle Neck Road Suite 101
Great Neck, NY, 11024
www.masonam.com

TRUMBULL MALL

5065 Main Street, Trumbull, CT 06611

SITE PLAN



Leased Available



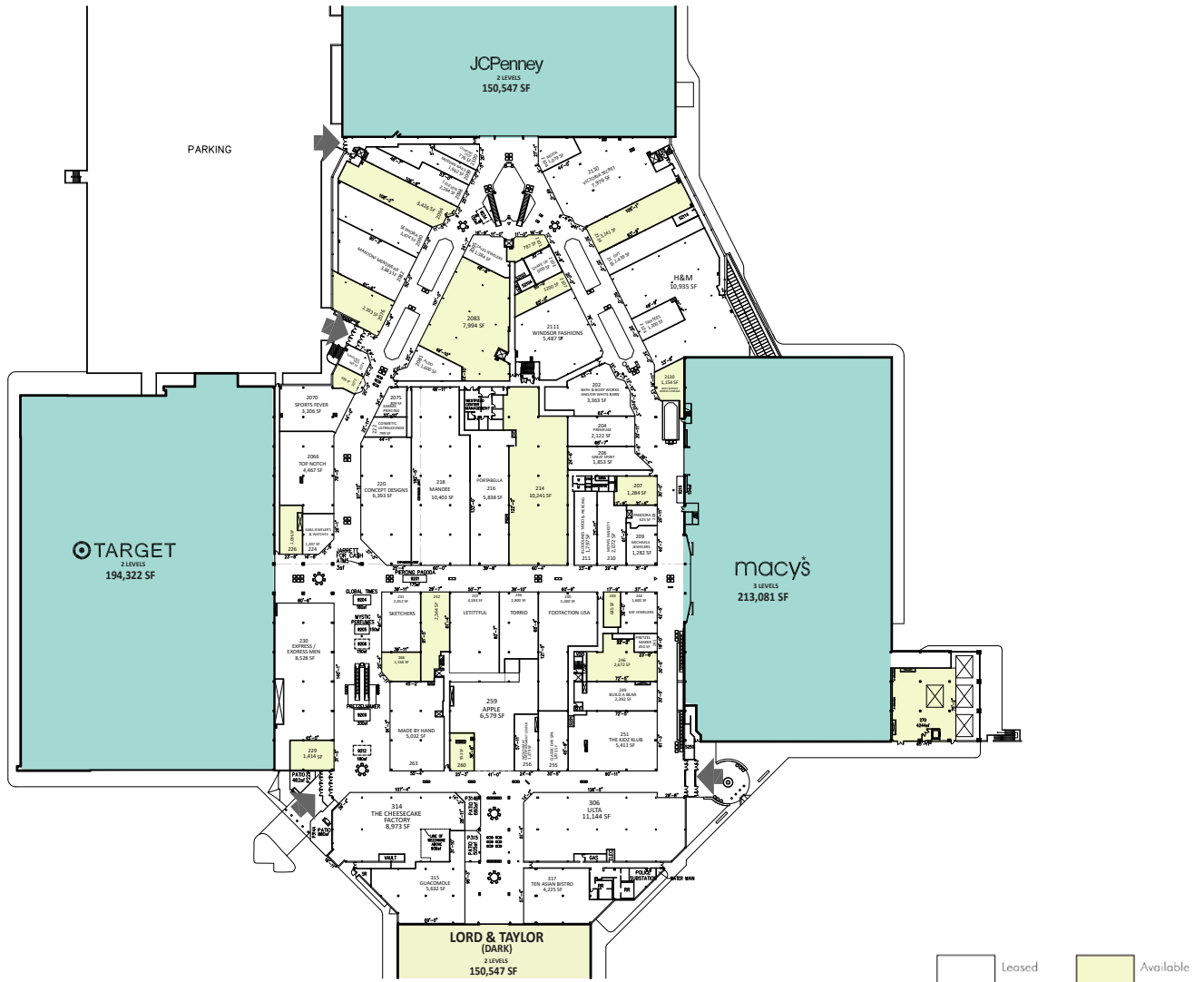
MASON
ASSET MANAGEMENT

T: 516 371.5858
E: leasing@masonam.com
747 Middle Neck Road Suite 101
Great Neck, NY, 11024
www.masonam.com

TRUMBULL MALL

5065 Main Street, Trumbull, CT 06611

LEASE PLAN UPPER LEVEL



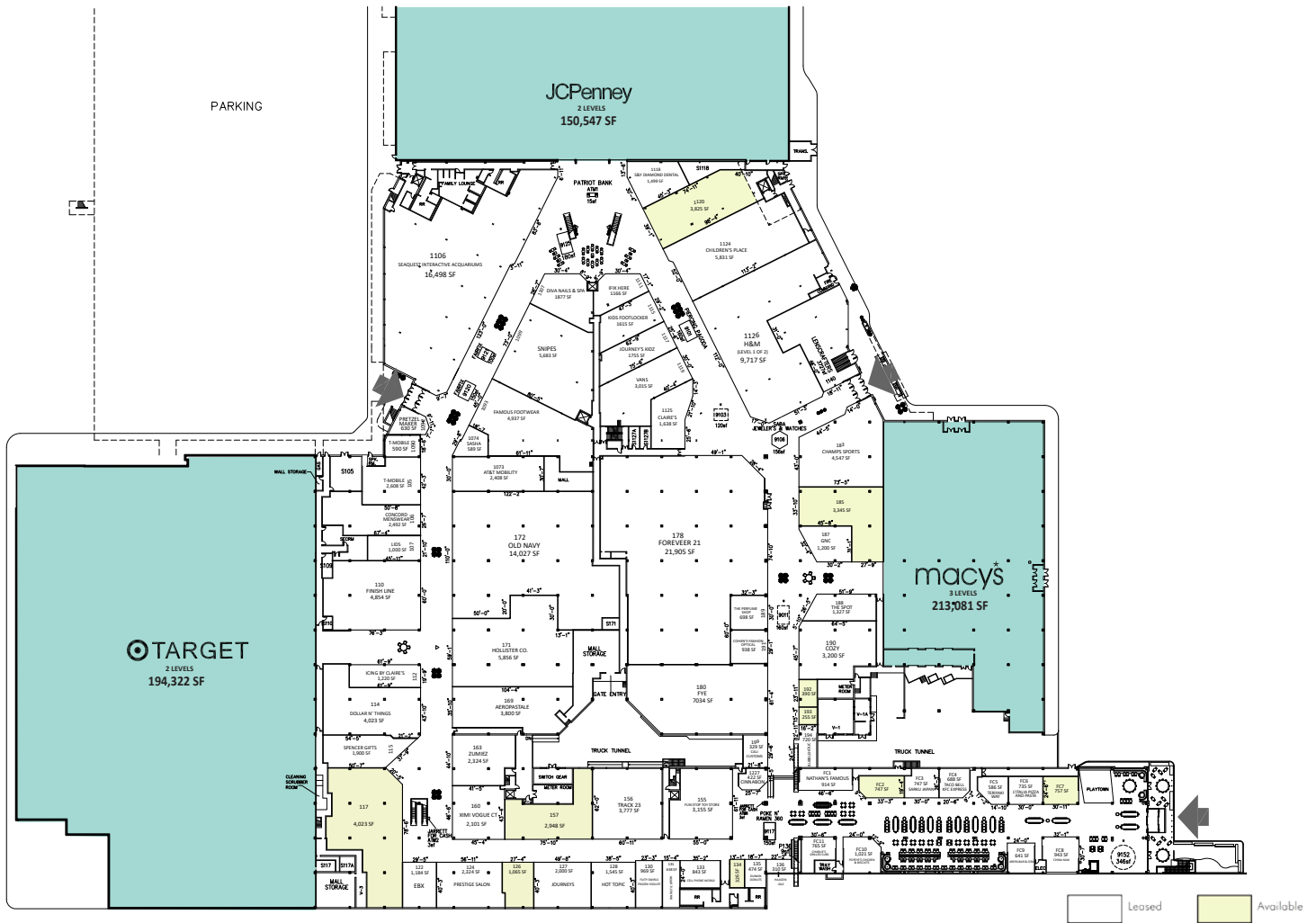
MASON
ASSET MANAGEMENT

T: 516 371.5858
E: leasing@masonam.com
747 Middle Neck Road Suite 101
Great Neck, NY, 11024
www.masonam.com

TRUMBULL MALL

5065 Main Street, Trumbull, CT 06611

LEASE PLAN LOWER LEVEL



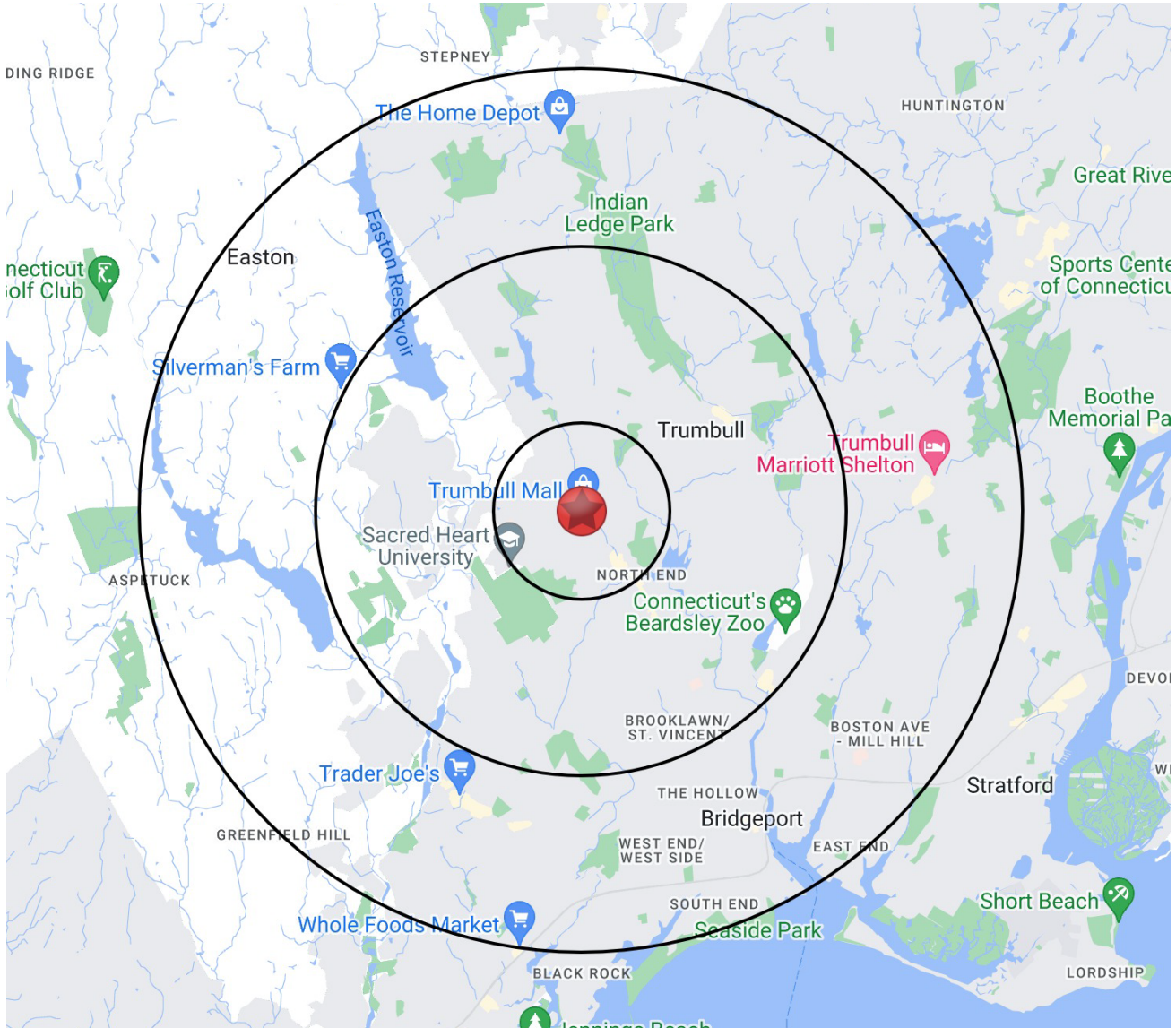
MASON
ASSET MANAGEMENT

T: 516 371.5858
E: leasing@masonam.com
747 Middle Neck Road Suite 101
Great Neck, NY, 11024
www.masonam.com

TRUMBULL MALL

5065 Main Street, Trumbull, CT 06611

RADIUS MAP



MASON
ASSET MANAGEMENT

T: 516 371.5858
E: leasing@masonam.com
747 Middle Neck Road Suite 101
Great Neck, NY, 11024
www.masonam.com